

Badingham ECHO



Aug & Sep 2018

BADINGHAM DIARY

Shop & Café Open	Sun 5th August	3 - 5pm
Kurling	Tue 7th August	Village Hall 7.15pm
Maypole	Wed 16th August	White Horse 6.30pm
Gather Together	Sun 19th August	Church 9.30am
Shop & Café Open	Sun 2nd September	3 - 5pm
Kurling	Tue 11th September	Village Hall 7.15pm
Gather Together	Sun 16th September	Church 9.30am
Maypole	Wed 19th September	Village Hall 7.30pm
Quiz	Tue 2nd October	White Horse 8pm
Defibrillator Refresher	Wed 3rd October	Village Hall 7pm
Harvest Lunch	Sun 7th October	Village Hall 12.30

Weekly events:

Parent & Toddler Group Tuesdays, 9.30 - 11.30 at the Village Hall

Wednesday Walks 10am leaving from Badingham Shop & Café

Table Tennis Club Mondays 7 - 9pm

Badingham Shop and Cafe...

Message to all our lovely shop supporters, customers and volunteers....

Please note that the shop will be closed for its summer break between, and including, August 21st to August 30th. Our volunteers are having a well-earned rest from all the great help and work they have done this year.

Big thank you.... to you all!

I'm always grateful for your contributions: stories, memories and cover pictures. So, please start scribbling! Don't forget to let me know if you want to make a request for help, ideas or publicity for an event.

The copy deadline for the next Echo is:

15th September

Please send news, articles etc to:

Tish King T: **01728 638259** (home from work 6.30ish)

Brick Kiln Farm, Badingham, IP13 8LE

Email : **BadinghamEcho@gmail.com**

Notes from the Editor

The Church Celebrations were a lovely way to spend a sunny, summer afternoon. Thanks to all involved. The next social event in the calendar is the Harvest Lunch - don't forget to book your place.

That same week a Framlingham First Responder is coming to give us a refresher on using the defibrillator and CPR. Put Wednesday 3rd October in your diary.

Carol and Mike say Farewell in this issue - amongst the long list of ways they have contributed to the village, who can forget Mike's Music DJ sessions at our 80s childrens' parties? Showing my age again!

I must add my huge thanks to them for coming to my aid for collating the last Echo. If there's any mechanical and/or methodical people out there who could give us a hand, it would be much appreciated.

I hope I've squeezed everything in - send along anything you would like to include next time. I'm hoping Malcolm will be writing a piece about Doris Zinkeisen after seeing one of her paintings on Antiques Roadshow. Can you share local knowledge with him?

It's that time of year again, thank you for your patience with farm machinery on the road as we bring in the harvest.

Best wishes, Tish

Latest Village News & Events

Check for updates on www.badingham.org.uk

New editor: Duncan_Horrocks@yahoo.co.uk

The ECHO is produced for the villagers of Badingham
by the Badingham Community Council
Registered Charity No. 274549

The Editor's decision on whether or where to place material is final. While every effort is made to check information published, the BCC does not endorse the accuracy or reliability of any article or advert within the magazine.

E. O. E.

BADINGHAM

COMMUNITY COUNCIL

The leaps from winter to a short spring and a hot gorgeous summer have taken place almost overnight. We are so lucky in this part of the country to be able to access the beach and all the fund of a seaside day out – long may it last!

St John's Church

On June 24th the church was open to view the new windows replacing damaged ones after the church was burgled. Old records were available to view too – births, marriages and deaths made interesting reading. Everyone was made to feel very welcome with delicious cakes and teas being served to visitors. Thank you to all who helped make the afternoon such a pleasure.

Defibrillator Refresher

A refresher course has been booked for us all to be reminded of how to use this machine – an important date for your diary! Wednesday October 3rd, 7pm at the Village Hall. We hope many people will be able to attend. Give me a call if you need a lift.

Thank You

A gift voucher has been sent to Mike & Carol Bostock-Smith from the BCC thanking them both for all they have done during their time in Badingham. They have moved to Halesworth but they will be missed in the village. They were always extremely supportive of the BCC on fete days, coffee mornings and particularly in 'putting together' the Echo. We wish them well in their new home but hope they will still come back regularly to see us.

We're always here to help - we recently found a decorator for a house-bound villager. Please give me a call if you are looking for assistance.

Finally, enjoy the summer and safe journeys wherever you are travelling to.

Pauline Skevington, Chairman
01728 602542

BADINGHAM

COMMUNITY COUNCIL

VILLAGE FETE

It was most disappointing, and extremely sad, that the fete had to be cancelled this year – for the first time I can recall.

I thank sincerely the small group of people who attended the open meeting in April to discuss the fete and those who offered help and couldn't be at the meeting. We need many hands to plan, setup and run the fete and felt there wasn't enough this year.

If anyone has good ideas for 2019, please let either Pauline or myself know what you would like to see. If we need to make changes, do come forward and say so.

Unfortunately, we cannot run a fete with just a few hard working people who kindly give up their time for the village. Badingham is well known for its enormous enthusiasm, so let's bring it back and put on a great fete next year.

Thank you to all who have supported us in the past.

Sonja

President BCC

LITTLE ERNIE DRAW

Congratulations to our winners...

April – Mr Robert Wardley

May – Mrs Dilly Clarke

Write to us c/o our Secretary, Sonja Russell 01728 638268
at Colston Bungalow, Badingham, Woodbridge, Suffolk, IP13 8LB

Our committee is a friendly bunch and would love it if you would like to join us. We meet roughly five times per year for short, light-hearted meetings to plan events and community work.

Car Treasure Hunt

On Wednesday 20 June, a beautiful sunny evening, 15 intrepid explorers met at the Royal Oak pub in Laxfield for a Treasure Hunt. We were given the clues and all set off, eager and full of enthusiasm.

Jackie and I were in one car and couldn't believe that we missed the first 6 clues, before being directed into the unknown! It was even more baffling when some of our friends were going the opposite way, looking as hot and confused as we were. We navigated through the stunning countryside, managing to work out that we were on the right road, wherever that was!

There was a lot of laughter and often I would shout "stop" and then Jackie would slam on the brakes and often reverse, as we had missed a clue. Well done Jackie, your emergency stops were quite amazing. We all met back at the Royal Oak for supper, lively chat and lots of laughter.

Thank you Pauline and Janet for organising a wonderful evening. As usual we all went home happy and smiling.

Wynne Willey

Treasurer of The Maypole Club

SHCT Ride & Stride 2018 Saturday 8th September

On the second Saturday in September cyclists all around the country are out raising money for their local Churches Trust. The idea started in Suffolk, who have consistently headed the fund-raising table.



The Ride & Stride is the main source of income to Suffolk Historic Churches Trust to enable it to make grants to churches and chapels of all denominations towards repair and restoration costs.

Cyclists are invited to seek sponsors who will donate for each place of worship they visit between 9 and 5 on Ride & Stride Day. The money raised is shared equally between the Suffolk Historic Churches Trust and the place of worship nominated by the cyclist.

Local Organiser: Patrick Grieve - patrick.grieve1@gmail.com - 663510
<https://shct.org.uk/ride-and-stride>

FAREWELL

Now that we have finally moved to Halesworth we'd like to say a huge "Thank you" to all our friends and neighbours in Badingham for making our time among you so happy. We lived there for 42 years and brought up our two girls there. They are sad to say goodbye to the house and village, of which they have so many happy memories, and have each paid three "final" visits!

We have been involved between us in the BCC (Mike started the Echo while chairman), Parish Council, Brownies, church, Village Hall committee, bell-ringing, quiz, recent Echo production and the shop/cafe, which is a wonderful enterprise. We shall be back for coffee there and back for the quiz. We feel privileged to have been part of such a lively and caring community, with exceptionally good neighbours, and had mixed feelings about leaving; but we do feel it is time to downsize and to live somewhere where we can walk to the shops, buses and trains, so when the right house came up we decided to go for it. We are sure that the new occupants of Broad's Meadow, Robert and Medeea, will receive a warm welcome from you all.

Thank you to the many who have sent us their good wishes. Please do come to see us when you are in, or feel like coming to, Halesworth. Our address is Maple Bank, 15 B Chediston Sreet, IP19 8BE. We are just a couple of hundred yards from the far end of the Market Place, on the left, tucked away behind another house and immediately opposite a postbox and one way sign on the right.

From July 10th (the 4th didn't happen!) our phone number is 01986 872674. Our emails are

bostocksmith@btinternet.com and
c.bostocksmith@btinternet.com

We wish all Badinghamians a very happy, healthy
and fulfilling future.

Mike and Carol B-S

VILLAGE QUIZ NIGHTS

A quiz is held on the first **TUESDAY** of each month 8-10 p.m.
in the White Horse Pub

Tables of up to six people (£2 per person)

Proceeds to local organisations

August & September - NO QUIZZES

October 2nd - St John's Church

Money raised from recent quizzes

Friends of Dennington School £70

Lighthouse Womens' Aid £50

Total raised October 17 to July 18 - £702

The Maypole Club

The Maypole Club meets on the
third Wednesday of the month
at 7.30pm in the Village Hall,
unless otherwise stated

Our Car Treasure Hunt around Laxfield,
Ubbeston and Heveningham was a lovely
summer evening. Most stayed for a bite to eat afterwards.
The forecast is fine and dry for our July meeting, so we are
looking forward to more friendly fun at our BBQ at Rita's.

Coming up in our calendar...

Wednesday August 15th - Evening Walk
Meet at White Horse at 6.30pm

Wednesday September 19th - Craft Evening
Boxes for all Occasions - bring a pair of scissors!

New members are always welcomed

For further info, ring Janet 01728 660379



**SAINT JOHN THE BAPTIST CHURCH
SUNDAY 7th OCTOBER 2018**



HARVEST FESTIVAL

11am

Come along and join us as we give thanks for the food that we eat and for all the many blessings of this life

We warmly invite you to our

HARVEST LUNCH

**12.30 for 1pm
in the Village Hall**

Menu will include a choice of 2 main courses served with potatoes and fresh vegetables, a choice of desserts, a drink with your meal, rounded off with coffee or tea

After Dinner Speaker - Ben Newton

Ben will be showing pictures and talking us about his experiences on trip to Poland with the Scouts, on which they tackled a series of projects to help the local area

Tickets: £12 Adults - free for Under 18s

available from

Ann 638288, Tanya 638894 or Badingham Shop and Cafe

Proceeds will be to support our church and 10% to Cancer Research

***Everyone is very welcome to either or both of these events
- we look forward to seeing you!***

Badingham Shop & Café



Opening times

Tuesdays, Wednesdays and Thursdays from 11am to 1pm for light lunches and homemade cakes and scones - and the 1st Sunday of every month from 3pm to 5pm for the ever popular cream teas.

Please note the shop & café will be closed for the last two weeks in August. It will reopen on Sunday

2nd September with the monthly delicious cream tea afternoon.

We're delighted to announce the café has achieved a 5 star food hygiene rating. A huge thank you to Helen Oldham who worked tirelessly to make sure that everything was in order for the inspection. Another big thank you to Terri James who was on duty in the shop when the inspector visited and who calmly dealt with all the questions.

Thanks to the commitment and support of a loyal band of volunteers the shop & café is a continuing success. We've been delighted to welcome some new helpers recently who have provided a great boost to the team. We are always grateful for any support so if you'd like to join our friendly group - for as few or as many hours as you like - please contact Annie on 638130 or Tanya on 638894 for more details.

Ron D'Sylva, who has been our treasurer since the beginning of the shop project, will be stepping down at the end of August. An enormous thank you to him for all his support and hard work in keeping the shop & café finances in order. Malcolm Knott is taking over the role and will work alongside Ron this month and next to ensure a smooth handover. We still require a secretary, so if you are interested in volunteering for this role please contact Tanya on 638894 for more information.

We welcome advertising in the shop from any local businesses or private concerns - a nominal fee of £1 a month applies.

Over the last two years, we have run a very successful Macmillan Coffee Morning/Afternoon and we hope to hold another one this year - the date is Friday 28th September. Anyone interested in helping to put on this worthwhile event is asked to contact Tanya or Annie.

A very big thank you to all our volunteers and customers for helping to make sure the shop & café continues to play such a valuable role in our community.

And finally, please do come down and see us for a spot of lunch or tea/coffee and cake. We have just reduced the price of a pot of tea to £1 a pot and you're guaranteed a warm and friendly welcome. We hope to see you soon!

SHERLOCK HOLMES

The Soldier's Daughter



and other new stories
by Badingham author

Malcolm Knott

Amazon £7.99 Kindle £3.99
or at the Badingham Village Shop

BADINGHAM NEIGHBOURHOOD WATCH

Sonja Russell,
Head Co-Ordinator

Tel: **01728 638268**

Email: geoffreyrussell@tiscali.co.uk



Now in to Summer with “Data Protection Principles”. Badingham NHW Data Controller is Sonja Russell awho will be responsible for the forms being sent out for Membership and Consent, if you wish.

I have been busy reading up on the above. As you know, we have Co-ordinators who have their own areas.

To cover the Co-ordinator - Personal Data has always been safe guarded by Data Protection rules, which are made very clear to all involved and always have been checked or asked when needed.

It is helpful to have peoples’ addresses and contacts numbers, as things arise and we need to share news, but that is up to you.

However, if our co-ordinators are delivering Newsletters, Welcome Packs, envelopes etc to every home in the village, without using or collecting personal information about people to whom it is delivered, Data Protection legislation DOES NOT APPLY and we do not need consent to do this.

If you are new to Badingham, your NHW pack will be delivered soon

CRIME FIGURES FOR SUFFOLK

Total recorded crime - up 19%
Violence against the person – up 29%
Sexual Offences – 33% increase
Drug Offences – 28% increase
Possession of Weapons – up 19%
Stalking and Harassment – up 74%

ENGLAND & WALES COMPARISON

Total recorded Crime – up 15%
Violence against a Person – up 21%
Sexual Offences – 25% increase
Drug Offences – 4% Decrease
Possession of Weapons – up 25%
Stalking and Harassment – up 33%

Figures: Office of National Statistics

STAMP OUT RURAL CRIME

Call the new dedicated Rural Crime Reporting Line on **0800 783 0137** or visit www.ruralcrimereportingline.uk to give information anonymously about one of these four crimes:

- ÿ Large-scale, industrial fly-tipping
- ÿ Hare coursing
- ÿ Livestock theft
- ÿ Machinery theft

YOUR NHW COORDINATORS

AREA 1 - SONJA RUSSELL (638268)

High Road A1120 from Park Cottages to Boundary Farm
Hollow Lane & Bruisyard Road, Wood Road, Colston Farm Area

AREA 2 -

COORDINATOR REQUIRED

Bowling Green Road, From Bowling Cottages to Lime Tree Farm including High House Farm

AREA 3 - HARRY HUGGET (621170)

Framlingham Road B1120 from Hill Farm to Shawsgate
Oakenhill Hall and Bungalow
Cransford Lane to Sweet Water Barn to Poplar Farm, Maple Farm

AREA 4 - JEAN & TONY KELK (638526)

Carrs Hill A1120 – Highbury to Bridge Cottage
Low Street, South – Blacksmiths Pightle to Spring Cottage

AREA 5 - JILL PORTER-HARDY (638660)

Mill Road South – Corner Lodge to Brick Kiln, including New Lea, Rectory Road

AREA 6 - GERRY NEWMAN (638488)

Mill Road North - Mill View to Pound Corner Cottage
Twin Oak Drive, Redhouse Road and New Road, Laxfield Road to The Priors

AREA 7 - ANDREW WALNE (638216)

Low Street north from Brooklyn House to Hulvertree area including Orchard Rise and Church Green

Please note our Coordinators do get assistance when they have large areas to cover.

RAGWORT

Ragwort poses a risk to animal health, with potentially fatal consequences if ingested by horses or livestock, either in its green or dried state. It is one of five weeds classified as 'injurious' under the Weeds Act along with Spear Thistle, Creeping or Field Thistle, Broad-leaved Dock and Curled Dock.

While it is not an offence to have these weeds growing on your land, they must not be allowed to spread to agricultural land. Natural England will investigate complaints and issue enforcement notices where there is a risk that injurious weeds might spread to neighbouring land; giving priority to complaints where there is a risk of spread to land used for grazing livestock, forage production and other agricultural activities.

Ragwort is a toxic plant and precautions must be taken when handling live and dead plants. Hands must be protected and arms and legs should be covered. Cut and pulled flowering ragwort plants may still set seed so dispose of them carefully.

Get in touch if you are willing to take on the NHW Coordinator role for Area 2

Thank you, Sonja

BADINGHAM NATURE DIARY

Paul Collins shares his noteworthy nature sightings
 Unless otherwise noted, all were seen at Pollards, Bowling
 Green Road:



2 May	Speckled wood	
4 May	Lesser whitethroat	Old Rectory Road
15 May	Azure damselfly	
	Large red damselfly	
	Broad-bodied chaser	First damselflies and dragonfly
21 May	Lapwing	Red Barn Farm ?non-breeding
22 May	Mother Shipton	
	Brown argus	Day-flying moth
27 May	Four spotted chaser	
	Emperor dragonfly	
	Hobby	Hobby = summer!
	Common blue butterfly	
29 May	<i>Nemophora degeerella</i>	Longhorn moth, males dancing
30 May	Spotted flycatcher	
3 June	Painted lady	
	Broad-bordered bee hawkmoth	Only second one in 34 years
	Red kite	Quite high
5 June	Clouded yellow	Unusual to see so early in year
6 June	Large skipper	
22 June	Sedge warbler	
25 Apr	Common Morel	

The Sedge warbler is another bird to add to our village count. We reached 75 in our 12 month bird count last year and have added another three since. I will ask Duncan to publish the list on the Badingham website so you can check, and let me know, if you spot any others.



Congratulations to Fred Jay who has been awarded a Long Service Award from the Suffolk Agricultural Association which recognises his 47 years working on the same farm.

Good luck with another harvest Fred

Small Moth News

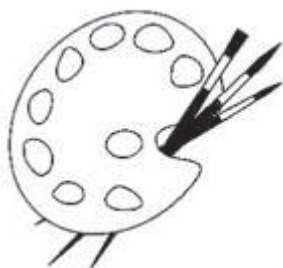
There's a riveting headline. Three or four years ago, I didn't know that there were such things as Longhorn Moths, then I was given a field guide to micro moths. There are around a dozen species of longhorns in the UK; their forewing lengths are mostly around 8 to 10 mm but their antennae can be up to three times that. Most of them have metallic forewings. They don't really have English names at the moment, although some have been applied fairly recently.

The first ones I bumped into (almost literally) were *Nemophora degeerella*, the males of which dance in a column, often in dappled sunlight, to attract mates. They make quite a spectacle, with the sun flashing off their wings.

The following year, I realised that the little insects buzzing around the garlic mustard flowers were actually moths and I identified these as *Cauchas rufimitrella*. These have greeny tinged wings.

This year, I found a third species, which I think is *Nemophora metallica*. If my identification is correct, it appears that this would be only the third record for Suffolk; I have submitted a photo on the iRecord website and wait to see whether it will be accepted. There is one thing counting against my identification and that is that we do not have any of the moth's known food plants (scabious) growing in our garden. We do have a *Cephalaria* and have had *Knautia*, which are all related, but I am wondering whether they might be feeding on teasel, which is in the same family.

Paul Collins



FRAMLINGHAM ART SOCIETY SUMMER EXHIBITION

St Michael's Rooms, Framlingham
August 17th – 20th
FREE ENTRY

OPENING TIMES

Friday	17th	10am – 7pm
Saturday	18th	10am – 5pm
Sunday	19th	10am – 5pm

REFRESHMENTS will be served throughout the Exhibition

Dennington CEVCP School



This term, Chaffinches have been learning about transport. They enjoyed a visit from Mrs Strachan and her baby Beau– though nappy changing didn't get many volunteers!

Robins have also been learning about transport and loved having a visit from Mr Steward and his tractor. Wrens have been reading *The Iron Man* by Ted Hughes and creating their own Iron Man creatures which have been on display in the classroom.

Swallows have been working hard on revisions for SATs. Now those are over, they've been exploring ancient Greece and the myth of Theseus and the Minotaur as well as rehearsing for the Summer Play.

An exciting project the school is taking part in is the Elmer the Elephant parade on behalf of St. Elizabeth Hospice's 40th birthday. The school's fund-raising target is £750. The plain white elephant will arrive in September and will be painted by the children to their own design.

The decorated elephant will then travel to the Suffolk Show, following which it will be placed in Ipswich for the summer holidays alongside small elephants from other schools and large elephants from major sponsors. It will then be returned back to the school for permanent display.

We're looking for people or companies who would like to help sponsor the school's elephant. This can be by company name, motif, a picture, or even by designing and painting your own square! The elephants will be seen by thousands of people as they follow the trail so please get in touch if you can help.

Tel: 01728 638206

Email: office@dennington.suffolk.sch.uk

Nextdoor Badingham

Have the inside scoop on Badingham? Now's your chance to share it with your neighbours! Contact Duncan Horrocks - duncan_horrocks@yahoo.co.uk 01728 638325



Dr Dan Poulter MP
Member of Parliament
for Central Suffolk and North Ipswich

Suffolk is a wonderful place to live, work and visit, with low rates of crime, but recently our County Town has seen an alarming increase in knife crimes, together with other violent crimes, over the course of the last few years. While many towns and cities further afield have experienced increasing knife crime, there are growing concerns specifically about knife-related violence in Ipswich. Sadly, in recent weeks, Tavis Spencer-Aitkens, aged just 17 was tragically killed in a knife attack in the town in broad daylight.

Over the 13 months to March 31st this year, some 404 separate incidents, involving weapons such as knives and other blades, were recorded in Suffolk - a third more than in the previous year. Given the serious nature of knife crime and this recent escalation, action needs to be taken to tackle this now. That's why I have called on the Government's Policing Minister, the Rt. Hon. Nick Hurd, MP to visit Ipswich urgently and meet with local Leaders and Suffolk Police to tackle the issue of rising knife crime in our county town and to see for himself the challenges faced by the Ipswich communities.

Ipswich remains a wonderful town – it is a great place to live and do business, and a safe and vibrant place to visit, but we do need, urgently, to work together to tackle the growing concerns about violent crime in

the town. There are deep-seated problems behind this recent growth in violent crime and I know that there are a great many dedicated people working tirelessly in our public services and in our communities to help discourage our young people from a life of violence and crime. But they can't do this alone. Our Police, Councils and communities in Suffolk share a collective responsibility to stop this dreadful violence and that's why I have asked the Government to fulfil its share of this collective responsibility, and to help us to tackle the scourge of knife crime head on.

In recognising that Suffolk is predominantly a rural county, I am delighted to learn that the National Farmers' Union has recently launched its Rural Crime Reporting line, in association with Crimestoppers. The cost of rural crime is rising significantly, causing anxiety for farmers and people living in the countryside. This brand new service, with call handlers specifically trained in rural crime, allows farmers, rural businesses and the public to anonymously report rural crimes and help to rid our countryside of this serious issue. To report an issue, please either call 0800 783 0137, or visit www.ruralcrimereportingline.uk to anonymously give information about four rural crimes – fly-tipping, hare coursing, livestock or machinery theft.

It is vital to ensure that Suffolk remains a safe place to live, work and visit, for all of us to feel safe in our day to day lives.

For advice call 01728 726 588 or email daniel.poulter.mp@parliament.uk

Annual Parish Meeting

A good crowd attended the Annual Parish Meeting to hear reports from the various village groups.

From Sonia we heard how the Parish Council are seeking a steering group to put together a Neighbourhood Plan. Volunteers are needed for Emergency Planning, in case of storm, floods or snow. At the time of the meeting there were vacancies for three councillors.

Particular thanks were given to Rob Welham who planted 100s of bulbs at the 'bench site' opposite the White Horse - wasn't it a splendid display? - and to Sue Piggott whose work as our Parish Clerk far outweighs her paid hours.

Looking ahead, the Parish Council is planning to take part in the Beacons of Light tribute to mark 100 years since the end of WWI.

The County Council report included such statistics as 94% of Suffolk children found places at their first choice primary school and 6,500 pot holes have been repaired since the start of the year. Cllr Burroughs also highlighted the Warm Homes Fund, for first-time central heating systems, and the need to recruit more firefighters.

Rob told of further work at the Pocket Park including trimming back the hedge, letting in more light to nearby houses. The pond is attracting more wildlife. Rob thanked everyone in the village who keeps Badingham

looking so nice as you drive through - floral displays and cutting the grass, every little bit helps.

Shirley thanked Sam Donovan for the contribution she has made to the Village Hall over many years. She explained how the committee were pleased to be accommodating more activities in the hall, such as table tennis, kurling as well as more private functions.

Last year's fete was held on the hottest day of the year. Sadly there will be no fete this year as it was decided not enough 'bodies' had come forward to offer help. Pauline thanked Carl Reeve for running the village website these past six years and Mike & Carol Bostock-Smith for collating the Echo - and Shirley Osborne and the VH team for finding a new home for the booklet-making machines.

Tanya sent in reports for Badingham Enterprise and the Shop and Café. She explained how ideas put forward in the Village Plan had first led to the Community Gardens and Tuesday Teas - a fab way of meeting other villagers. Ten volunteers regularly help in the shop, others as and when. There was a reminder that others can use the shop as a meeting place when the shop is not open (with agreement of the landlords, Caroline and James). Looking for new projects, one suggestion is a village orchard and green space behind the new housing development.

T

Pauline's report described the diversity of the Maypole calendar of meetings - from a quiz to craft demonstrations, from cheese and wine sampling to a treasure hunt. The club is looking forward to celebrating their 25th birthday later this year.

Ann offered huge thanks to all those who donate their energy and time to Saint John's Church. She thanked Deidre and Philip for maintaining services following Jonathan's retirement - the benefice is advertising a part-time post. There was a packed church for the Crib Service and carols in the pub was a popular as ever. A chamber concert and generous donations had funded the new vestry windows.

Dawn described Badingham Play-school as a huge asset doing phenomenal work, giving children the best possible start. This year they celebrate their 45th birthday and have welcomed three young members of staff to the team. Reduced storage in the village hall is proving a challenge and the trustees are actively looking for alternative sites. Children feed into six primary schools - from Yoxford to Wetheringsett. Later, we heard how Stay & Play is subsidised by Play-school and is a great benefit for young families - welcoming pregnant mums, parents and carers for sessions of music and song on Tuesday mornings.

ony gave us an update on the defibrillator, which he checks fortnightly. It hasn't been used so far, he was pleased to say but suggested a refresher course is held to prepare people should they need to use it. Call 999 for the access code and the machine will tell you what to do - Meg and Malcolm, next-door to the village hall also have the number by their front door.

Duncan wore two hats, first to describe the success of Nextdoor Badingham. 115 people have signed up to receive updates; a great way of distributing information around the village. More people are needed as bell-ringers. Badingham church has five bells but there is a shortage of people who ring. If you are interested in learning, get in touch. You can earn £25 for ringing at a wedding.

Malcolm explained the relaxed running of the Gardening Club without any committee or subs - simply meeting in each other's gardens for tea and cake and one, perhaps two, outings each year to interesting gardens.

Ian was proud to announce the Village Quiz had raised £720 for charities over the past season. He thanked all those who support the quiz, especially the quizmasters and Mark & Lisa for hosting the events.

Afterwards, it was time for a drink and some nibbles and a good natter.

**SAINT JOHN THE BAPTIST CHURCH
BADINGHAM**

Gather Together

A service for everyone from nought to a zillion
at 10am lasting approximately 30 mins.
followed by coffee / juice and biscuits

Sunday August 19th
Miracle of the Loaves and Fishes
- in the churchyard weather permitting

Sunday September 16th
The Man Who Came Back

**If you have not been before why not give it a try
you will be very welcome**

Sunday 24th June 2018 - The Feast Day of our Patron Saint was a stunning day both in terms of the weather and the occasion.

We don't know quite how many people came along to view our new and beautifully crafted vestry windows or to inspect our very special records, which generated much interest, but we know we used 60 cups and saucers - many may, of course, just have come for the delicious cakes and a tour around the Community Gardens. Whatever the case, the afternoon was a happy hub-bub of people enjoying themselves and chatting both in the church and outside in the churchyard.

The open afternoon was followed by a lovely and well attended service of our favourite hymns to commemorate Saint John the Baptist's Feast Day.

Our thanks and appreciation to everyone who worked hard to make the event a success and most especially to everyone who came along.

Ann

EAST ANGLIA by Sonja

The geographical region of East Anglia is a much wider area now. Before the 1960s, it was just Norfolk and Suffolk. Administrative boundaries changed to include Northamptonshire, Lincolnshire, Herts, Beds, Essex and Cambridgeshire. These follow the rivers, thus arbitrarily dividing the counties.

Norfolk and Suffolk with their long coastline from the Wash to Felixstowe are maritime counties. The watershed between the East Coast rivers and the Wash river lies in an area of heavy clay soil, chiefly derived from boulder clay. It runs down the two counties and is continuous except where it is dissected by river valleys, one time supported by thick woodland, which impeded communications between the more habitable areas to its east and west. This formed a belt of another geographical feature common to the countries with a ridge of chalkland, around 5 miles to 10 miles wide. This corridor connects Southern England with East Anglia. Passing through Cambridgeshire, it runs through North/West Suffolk and West to Norfolk to reach the coast of Hunstanton.

Regions of East Anglia can be divided into three main zones, a central clay belt and two areas of lighter soils. These are sub-divided into zones with varying soils and vegetation. These were more attractive than others for early farmers, as they possessed light soil. Soils for vegetation and supporting light growth of woodland was cleared by primitive equipment. Badingham was one of these areas.



Defibrillator Refresher

Wednesday October 3rd

Village Hall at 7 o'clock

Heritage Open Days

Your chance to see hidden places and try out new experiences - all of which are FREE to explore.

6-9 & 13-16 September

Find out more: www.heritageopendays.org.uk

Farming Calendar

Harvest has started early with the rapeseed fields the first to be cleared. There is probably a whiff of cabbages in the air! We use an extra knife to cut our way through the crop and a different sieve in the combine harvester to extract the tiny black seeds which are crushed for their oil.

We drilled the rapeseed last August, taking nearly a year to grow. It's a precarious time as we wait for the crop to ripen. Some farmers use sealant to protect the fragile seed pods from shattering in changeable and stormy weather. Getting a uniform moisture content is tricky – around the edges of the fields, the 'headlands' in the shadow of trees and hedges, and in patches which have been attacked by pigeons, the crop won't be as quite as mature and some trailer loads may need to go through the dryer. An expense all farmers would rather avoid but necessary when the merchants penalise or reject crops where moisture is too high. For oilseeds, the moisture content needs to be just 9%.

Last weekend I travelled through France and Belgium on Eurostar. Only my fourth time overseas – we don't really 'do' holidays in this family! - I was surprised to see the fields divided up into narrow strips, some sections cleared, others with ripe crops impatiently waiting to be harvested. In French law, bloodline has traditionally taken precedence over the surviving spouse, making for a patchwork as over the generations fields are subdivided between the family. How complicated!

BADINGHAM VILLAGE HALL

Need a venue for a family get-together or children's party?

Our Village Hall is available to hire daytime on alternate Tuesdays from 1pm onwards and weekends and evenings throughout the year. The spacious hall has a kitchen and bar area, with plenty of tables and seating.

To hire the Village Hall please contact:
Debbie 638325

	Village Residents	Others
Hourly rate	£6 per hour	£8 per hour
Day Rate	£60 per day	£70 per day

All cancellations must be made a week ahead of the booking to avoid charges

Flybird

Installations

Supply and installation of quality fly screen windows and doors

Contemporary sun shading for patios, creating extra outdoor living space

Visit our website to download the e-brochure

Contact : **Chris Spark**

www.fbilttd.co.uk

Email : chris@fbilttd.co.uk

Tel : **01728 638110**



CARL BUCKINGHAM

GENERAL BUILDER PROPERTY MAINTENANCE

Very reliable with
33 years' experience

Tel: 01728 638667

Mob: 07773 008720

Email: loucarl@tiscali.co.uk

f Visit my Facebook picture gallery
Carl Buckingham General Builder

Badingham Church Bring & Buy Books

All welcome to borrow or buy for a small donation

Money raised in aid of local charities and the up-keep of our church



BOWLS CLUB

Interested in joining Badingham Bowls Club? Call Lola 638305

GARDENING CLUB

We meet on the 1st Thursday of the month in members' gardens. Call Meg to check venue 638728

BELL RINGERS

We meet for practice every Thursday evening at 7.30pm at Badingham or Dennington.

Just turn up (Badingham on odd-numbered Thursdays) or give us a call: Duncan 638325



KINDLEWOOD

Firewood & Kindling Suppliers

We also carry out: Tree Work, Hedge Cutting,
Grass Cutting, Timber Extraction,
Firewood Processing and Log Splitting

NPTC Qualified & Fully Insured

Phil: 01728 621306 Mob: 07786734706
or Lee: 07877 488736 E: info@kindlewood.biz

www.kindlewood.biz

Goodly Heritage Alpacas
can provide some very
nutritious manure
that can go straight
onto plants

£2.00 a large bag
or Horse manure £1.50 bag

Call Lindsay
01728 638238
[Lindsay.maclusky
@btopenworld.com](mailto:Lindsay.maclusky@btopenworld.com)

Raw fleece sometimes
available to buy for
spinners and felters as
well as Yarn and Socks

Bulstrodes

27 BRIDGE STREET, FRAMLINGHAM
SUFFOLK IP13 9AJ
01728 621152
www.billbulstrode.co.uk

TOYMASTER

Your **REAL** Toy Shop

Stocking All Major Brands
The largest stock of **LEGO** in Suffolk?

Kodak

Print Place

Digitally print photos instantly
NEW Biometric Passport Photos

Carpet & Flooring Services
Estimates, Sampling, Experienced Fitting



Single long-stemmed fabric flowers
make the perfect little gift ...



Gift-wrapped from £4.50 for one

Handmade felt & fabric flowers

Search Myrtle Made It on Facebook and www.etsy.com

Jen Woodhead, Mill Road, Badingham
jenefer.woodhead@gmail.com

MOAT FARM STABLES & KENNELS
LITTLE GLEMHAM
07825 006090

Four double kennels with runs and heat lamps



Large outdoor run

3 walks per day

Day care available



Council registered and inspection very welcome



Badingham Playschool & Little Fishes



The Nursery School at Badingham Village Hall, IP13 8JS

Providing Quality, Affordable Day Care for children aged
3 months to 5 years

Open every day, Monday to Friday
Offering flexible hours between 8.30am - 4.30pm
We accept grant funding for 2, 3 & 4 year olds
Holiday Clubs available

For more information about Holiday Clubs
or for your child to join Playschool
please contact Michele on
01728 638804 / 638776
m.cole9@btinternet.com

<http://badinghamplayschool.weebly.com>

BADINGHAM STAY & PLAY

Parent and Toddler Group at Badingham Village Hall
Tuesdays 9.30 'til 11.30am term times £2 a family
to include craft activities, music and snack

ODD JOBS

BRETT STRINGFELLOW
Property and Garden
Maintenance
Handyman with 20+
years of experience,
friendly and reliable
01728 638 623
07398 816 616



THE HAIR SHED

Mandy Lloyd hairstylist
Welcoming past, present
and new clients
Competitive prices
Lovely salon at 1 Mill Rd
Badingham IP13 8LG

01728638806
or 07961889332

BOUNDARY FARM COTTAGES LUXURY COTTAGES IN TRANQUIL SURROUNDINGS

Idyllic one bedroom holiday
cottage in Badingham

3 fabulous cottages and
2 shepherd huts
Saxtead Rd, Framlingham

Contact:

01728 638003
info@boundaryfarmcottages.co.uk
www.boundaryfarmcottages.co.uk

BIG SKY CLASSIC CAR HIRE

Hire an iconic
Classic Sports Car

Morgan 4/4 1600 2 seater
Triumph Stag
Morgan +4 2000 4 seater
Jaguar XK8

Prices from £135 a day
Gift Vouchers available

Big Sky Classic Car Hire
01728 638003
info@bigskyclassiccarhire.co.uk
www.bigskyclassiccarhire.co.uk



Juicing - September 19th
Make your own Herbal Teas -
October 3rd

www.thecarrotcrew.co.uk

**1 to 1 Nutritional Advice,
Weight Management
& Eating for Fitness**

nutritiontanyanewton
@gmail.com or text Tanya on
07722354468 to book a session

Gavin Read

**GENERAL BUILDER /
PAINTER & DECORATOR**

Honest & Reliable

**Call or email me
for a quote**

Tel: 01728 638949

Mob: 07917 564842

gav_read@hotmail.co.uk

Advertising Rate Card

Thanks to all our advertisers who support the Echo's printing costs.

Annual costs (6 issues):

Full page advert: £25.00

Half page advert: £15.00

Smaller adverts: £ 7.50

Each year 6 issues of the Echo are delivered by hand to every household in Badingham and to members of the Community Council who live close by

Contact the Editor if you would like to advertise your business or service

If you live in Badingham and have unwanted items to sell, these will be included free of charge

Before this gets too tempting



Give us a call !

01728 726509

Computer Repairs, Data Recovery,
Backup Solutions, Antivirus Solutions,
Internet / Wireless Issues Resolved,
Website Design, Home or Business

www.jcaonline.co.uk

EYELASHES
& EYEBROWS
by Pippa

Russian lashes £50
Classic lashes from £24
Microblading £95

@pippatigerlove
naturalbeautyzone

07717782952 or 01986798658

pippatigerlove@talktalk.net

Laxfield

*Simply Beautiful
by Anne*

Weddings, Bridesmaids

Ball Gowns

Curtains & Cushions

Alterations and much more

Free estimates given

T: 01379 384097

M: 07944 894757

J. FELTON 
CHIMNEY SWEEP

CLEAN AND FRIENDLY SERVICE

SMOKE TESTS

INSURANCE CERTIFICATES

CCTV INSPECTIONS

FULLY INSURED

COMPETITIVE RATES

PLEASE CALL **01986 799175**

Registered member of
the Institute of
Chimney Sweeps



**DG Carpentry
& Joinery**

Daniel Grimwood

Contact:

Tel: **07913 291732**

or email

dgcarpentryjoinery
@hotmail.co.uk

PRIVATE CARER

Available for
occasional or regular
care of the
elderly /disabled

Local
Trained to NVQ2

Contact
07879 862991

Tony Whittle

TW Tree
&
Gardening
Services



**All Aspects of Tree Surgery
plus**

- * Hedges Trimmed ***
- * Rough Areas Strimmed ***
- * Garden Rubbish Cleared ***

01986 798928
07787 753525

LESTER MAYES

Carpet and upholstery
cleaning

Friendly, local service

Carpet and Fabric
Protectors
Applied

Moth Treatments Available

01728 660186
Mobile: **07867 681571**

Bridge Street Barbers

01728 621622

Opening times

Tuesday & Fridays
9am-6pm

Wednesdays 2pm-7.30pm

Thursdays 10am-4pm
appointment only

Saturdays 8am-2pm

Walk in, no appointments necessary

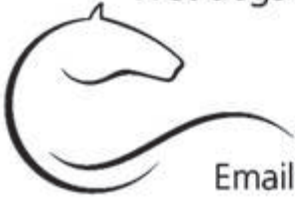
Bridge Street, Framlingham,
IP13 9AH

THE WHITE HORSE @ BADINGHAM

15th Century Inn with an offering of traditional
home cooked pub food

Three comfortable en-suite rooms with all the charm
you would expect from a generally old building

"Wet dogs and muddy boots welcome"



Low Street, Badingham,
Suffolk, IP13 8JR

Tel: 01728 638280

Email: whitehorseinbadingham@gmail.com



Fiona Patrick's Therapies

Massage is beneficial for aches, pains, tension, stress, headaches, relaxation,
general well-being and so much more...

Holistic Massage – Back Massage
Hot Stone Therapy – Reflexology
Body Scrubs & Wraps

Relax and Unwind... www.fp-therapies.co.uk

Cosy & Comfortable Treatment Room - Fully Qualified & Insured
Take some time out and look after yourself

Contact: 01379 388458 (Brundish) or Fiona@fp-therapies.co.uk

Brundish Training Centre

Courses for iPads, tablets and computers

Lessons available for all levels of ability
New courses starting regularly



For more information
please contact:



t. **01728 627174**

(please leave a message if we are out)

e. **admin@brundishtrainingcentre.co.uk**



MARY SKELCHER
PERSONAL TRAINER

Personal Training
for individuals or couples
Fitness * Weight Loss * Toning
Eating for Health

01728 660034 / 07804 398427

mhsfitness.com



1st Cut Tree Services

All aspects of treework

- ◆ Tree Surgery
- ◆ Dismantling & Felling
- ◆ Precision Felling
- ◆ Crown Reduction & Thinning
- ◆ Stump Grinding
- ◆ Fully Insured
- ◆ Free Quotations
- ◆ Land Clearance

Tel: 01728 666027

www.1stcut.net



LOCAL TRANSPORT

Service 118 Eye, Stradbroke, Laxfield, Framlingham, Ipswich

Monday – Friday (Schooldays only)

Stradbroke	07:28	Ipswich, OCM	17:15
Laxfield	07:36	Otley College	17:35
Pound Corner	07:42	Framlingham, White Horse	17:59
Badingham, White Horse	07:45	Badingham, White Horse	18:10
Framlingham, Bridge Street	07:55	Pound Corner	18:13
Otley College	08:19		
Ipswich, OCM	08:43		

Service 482 Framlingham, Diss

Monday – Friday

Ipswich, Old Cattle Market (service 118) 13:45

Framlingham, White Horse	10:20	14:50
Badingham, White Horse	10:30	15:00
Pound Corner	10:33	15:03
Laxfield	10:40	15:10
Stradbroke	10:51	15:21
Eye	11:10	15:49
Diss	11:35	15:55
Diss	09:10	13:30
Eye	09:25	13:55
Stradbroke	09:44	14:14
Laxfield	09:55	14:25
Pound Corner	10:03	14:33
Badingham, White Horse	10:06	14:36
Framlingham, Bridge Street	10:15	14:45
<i>Ipswich, OCM (service 118)</i>	<i>11:23</i>	

Service 121 Stradbroke, Woodbridge, Ipswich

First and Third Tuesday of the Month

			Sch	No Sch
Stradbroke	09:20	Ipswich, OCM	13:40	14:10
Laxfield	09:30	Woodbridge, Turban Ctr	R	R
Badingham, Church	09:39	Melton	R	R
Badingham, White Horse	09:41	Sweffling	14:40	15:10
Sweffling	09:59	Badingham, White Horse	14:58	15:28
Melton	10:25	Badingham, Church	14:59	15:29
Woodbridge, Turban Centre	10:30	Laxfield	15:08	15:33
Ipswich, OCM	11:03	Stradbroke	15:18	15:48

Suffolk Link Loes

Our local 'demand responsive transport' operates in the area bounded by Yoxford, Earl Soham, Hacheston and Saxmundham, between the hours of 07:00 and 19:00 Monday to Saturday. To book your journey call **01728 635938** between 08:15 and 16:00 (Monday to Friday) up to 7 days in advance. Journeys can be to anywhere in the served area and can connect with other public transport eg buses in Framlingham to Woodbridge and Ipswich or trains at Saxmundham to Lowestoft or Ipswich.

VOLVO SELEKT

Approved Used Cars



New and Used Volvo

The Total Motoring Solution



Call us today on

01986 874464

to arrange a test drive or visit our website for details of our stock list and current offers

www.mrking.co.uk

46 Quay Street, Halesworth, Suffolk IP19 8EY



BADINGHAM DIRECTORY

Emergency Services Use your grid reference if possible Dial 999

POLICE - Framlingham Fire Station, Saxmundham Road Dial 101
 Staffed by volunteers on Mon, Tue, Thu & Fri 9am - 1pm

DOCTOR	Pembroke Road, Framlingham	01728 723627
DENTIST	Framlingham Dental Surgery	01728 723651
VET - Castle Vet Group	Pepperwash Lane, Framlingham	01728 723480
VET- Framlingham Vets	Station Road, Framlingham	01728 621 666
Neighbourhood Watch	Sonja Russell	01728 638268
Play School	Michele Cole	01728 638776
Primary School	Dennington	01728 638206
High School	Thomas Mills, Framlingham	01728 723493
Church	Ann & Bob Foster	01728 638288
Library	Bridge Street, Framlingham	01728 723735
White Horse Pub	Lisa & Mark	01728 638280
Groceries	Emmetts, Peasenhall	01728 660250
Window Cleaner	Ed Parker	01728 660264
Milk	Dairy Crest	01493 660400
Newspapers	Patricks of Framlingham	01728 724414
DIY Materials	Framlingham DIY	01728 723505
Taxi Service	Country Cars	01728 724377
Fresh Fish Van	Spencer Wightman	07929 097124
Parish Council	Sue Piggott	01728 746622
Parish Recorder	Victor Warne	01728 638357
Community Council	Pauline Skevington	01728 602542
Enterprise Badingham	Tanya Newton	01728 638894
Maypole	Janet McGeevor	01728 660379
Badingham Echo	Tish King	01728 638259

Country Cars

Your Local Friendly Service
 Call us now for Shopping - Stations
 Airports Lakeside - Ipswich

01728 - 724377

Don't drink & drive call
 Country Cars

BED & BREAKFAST COLSTON HALL

Badingham

en-suite, TV lounge, wholesome farmhouse
 breakfasts, ground floor rooms - plus
 self catering holiday cottage

01728 638375